



Rejoice International School



Explore

Experience

Express





- **Rejoice International School** promotes learning and inclusivity for all:
- We are a welcoming, caring, open-minded community honouring all traditions and cultures.
- We are dedicated to Excellence with a Well-structured curriculum striving for continual learning and improvement, particularly with regards to equality, inclusion, diversity and sustainability.
- We encourage pupils to develop personal qualities such as self-motivation, collaboration and leadership.
- We believe in building Character by embarking on One Virtue at a Time.
- We cultivate individual curiosity and intellectual rigour in our pupils to enable their interests to take flight.
- We are a caring Family-Oriented School where your child will be nurtured and indulge in learning that is enjoyable, futuristic and as a way of living.
- We nurture confidence, creativity and risk taking in our pupils as they study, in preparation for higher education, the world of work and happy, curious lives.
- We help our pupils pursue subjects they love, give them the experiences of using discretionary effort to succeed, and makes them brilliantly employable for the future.



EXPLORE

Exploring by creating learning spaces that are exciting, safe, meaningful and joyous is one of our key endeavors at RIS.

3E

Learning Model

EXPERIENCE

At RIS, we aspire to involve every child in the process of learning thus making each experience more relevant, effective and happy.

EXPRESS

"Freedom to Express", is our aim! To give every child an exclusive platform to express his/her talents, skills & emotions is a priority at RIS.

EARLY
YEARS
PROGRAM

PRIMARY
SCHOOL
PROGRAM

SECONDARY
SCHOOL
PROGRAM

AFTER
SCHOOL
ACTIVITIES

DAY
CARE
PROGRAM

Welcome to Rejoice International,
a Happy School which encourages
every learner to

express,
experience &
explore.

RIS promises to give our learners a unique edu-space that not only makes children enjoy learning but also enables them to apply what they have learnt. With quality education at its core and technology as one of its key driver, RIS promises to give our children a wholesome, holistic and balanced learning experience. We invite you and our little learners to be a part of the educational evolution at Rejoice International School.



Learner Profile

Open - Minded

I listen to other people and respect their ideas.



Reflective

I think about my own work, I know when I've done well and when I could have done better.



Communicator

I can share my ideas with others in many ways and in more than one language.
I listen to others.

Thinker

I think carefully and show initiative. I make good decisions and I'm a problem solver.



Learner Profile

Knowledgeable

I know about many things and I remember what I have learnt.



Curious

I am curious and enjoy learning. I try to find out new things.

Risk - Taker

I have confidence to try new things. I stand up for the things I believe in.



Caring

I care about people, plants, animals and the Earth. I help others and I look after the environment.



ELEVATE @ RIS



SPARTA

ANNUAL SPORTS DAY



**ANNUAL
CULTURAL
DAY**

WE ARE A



SCHOOL



**ACTION FOR
HAPPINESS**



**MODEL
UNITED
NATIONS**



LPDP



**STUDENT
EXCHANGE
PROGRAM**



Progression

program

The School Leadership House System



PHOENIX HOUSE

Resilience, Strength and Spirit



DRAGON HOUSE

Legacy, Wisdom and Endurance



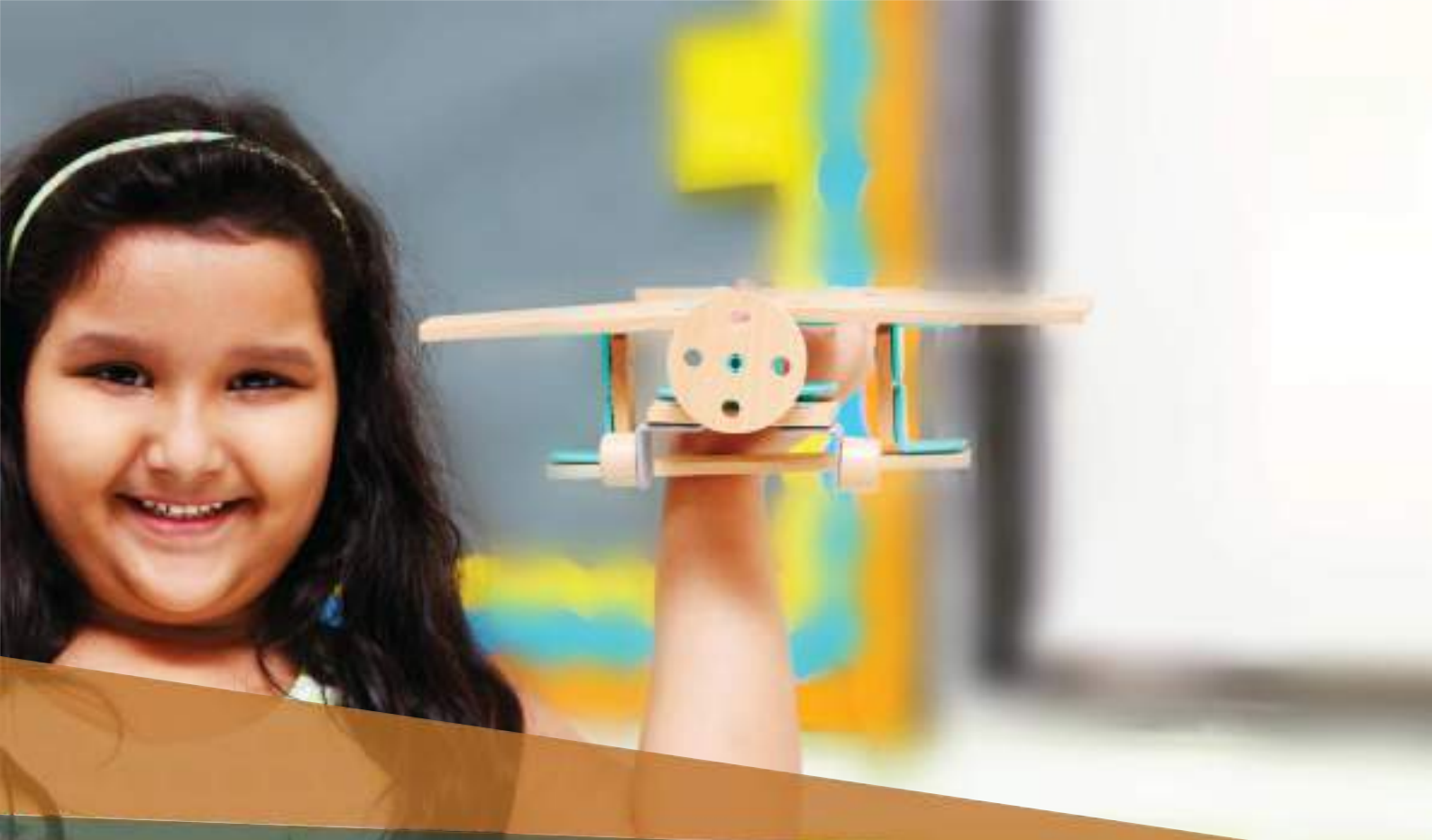
GRIFFIN HOUSE

Courage, Loyalty and Intelligence



DRAGON HOUSE

Consistency, Determination
and Valour



HAPPY SCHOOLING

Rejoice International School aims to become a truly international school providing high quality international education program in a stimulating and progressive learning environment. We aim to enable and facilitate every learner discover and develop his or her potential and become a responsible and balanced global citizen. The school aspires to offer its learners, an individualized academic experience, based on a transdisciplinary approach, a comprehensive co-academic developmental program that prepares them holistically.

Making learning relevant by drawing on the educational expertise of the CAIE Curriculum to “develop the individual talents of young people and teach them to relate the experience of the classroom to the realities of the outside world. We aspire to provide learners with safe, innovative and technologically integrated learning environment that complements our teaching learning process and prepares the learners for problem solving, critical thinking and innovation in the 21st century.

values

The school has 6 core values:

Honesty & Transparency

The school believes in setting up systems and practices that are transparent. Every learner, teacher, stakeholder must follow the principles of honesty and truth. We believe being honest to one self and others is the most important value that can shape up one's life.

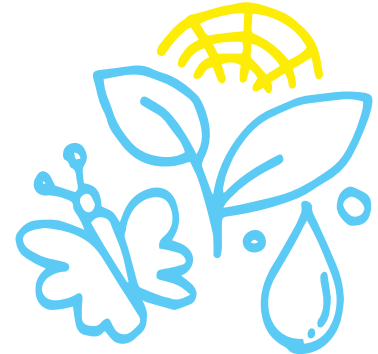
Accepting Change

Change is the only constant and accepting the same for bringing in constant improvement and innovation is what we want our learners to acknowledge and accept.

The Green Brigade

We believe that environmental consciousness is one of the key requirements of 21st century. A structured program that sensitizes the children towards importance of plantation, climate change, waste management, water conservation and respecting wildlife and life integral is all part for the Green Brigade program at RIS.

Nature Zone, Flower Pods, Butterfly Park & Best from Waste Zones are naturally integrated and supplement the program at RIS. We believe that children if sensitized at an early age can become the ambassadors of change.



VALUES & VIRTUES



Movies, stories, theater, role plays, scenario mapping are all part of the Values & Virtues Program at RIS. Developing good habits, respecting others and accepting others ensure that children imbibe love, care and compassion for all. Our community outreach program in association with NGO's also ensure that children are part of the social change at an early age. We believe that with right parenting and a positive environment at school we can inspire our children to become good human beings first.

BOOKWORMS

Reading is must for all at RIS. The Bookworm program is moderated and pushed aggressively through our centralized library. Children are encouraged to read, interpret and analyze. Our aim is to develop the love for reading. Book reviews, role plays, leisure reading, advanced reading are all part of the Bookworm Program at RIS.

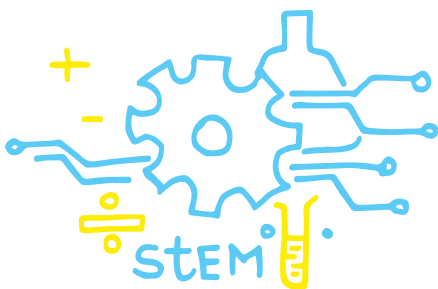
"Along with these special program, RIS celebrates all the cultural festivities, organizes frequent field trips for all children, conducts in school competitions, debates declamations, quizzes, Olympiads, DIY Projects (Do it yourself workshops), Family engagement days and much more. The core agenda is to create platforms for all children, teachers and families to collaborate and make a happy learning community."



PE & Sports

The Sports & Physical Endurance Program at RIS aims at building the fitness culture amongst children and adults. With wide range of offerings ranging from Yoga, PT exercises, play fitness, primary level obstacle courses, concentration based exercises the physical endurance program builds stamina, agility, flexibility and strength thus laying a strong foundation for pursuing any sports.

The sports program under the able guidance of coaches enables the children to pursue sports and excel in the same.



STEM Learning

Freedom to experiment, apply and innovate is what STEM (Science, Technology, Engineering, Mathematics) brings to the table. The STEM learning program begins from Pre Primary and continues right uptill Secondary School.

The Tech Frontiers

The Tech Frontiers program opens a window into the future. Powered by devices and software from Microsoft, Apple and Google the school aims at optimizing the tech tools for teaching and learning.





EDUCATOR'S interface

At RIS, we believe that effective learning is where the learner is engaged and motivated to explore and investigate, develop skills, knowledge, and understanding and can apply these with a sense of purpose, progress and achievement in different contexts.

Educators have to play a very important role in this process. From being a friend, mother, confidant and mentor. An educator plays a critical role in shaping the personality and attitude of a child.

We hold our Educators in high esteem. We believe that a happy, empowered educator can do wonders with the children. It's imperative that we respect and give importance to the challenge that educators have accepted. At RIS, we welcome Educators from different backgrounds having varied perspectives.

We believe in a mixed age and multicultural team that gives us the balance of energy and experience. Every educator interface at RIS is smooth, transparent and easy for the students, parents and colleagues. With constant training and empowerment program, sharing best practices within and beyond the team the Educators at RIS are progressive, tech savvy, keen to listen to the students and open to adapt and transform learning. Every learning interface at RIS is filled with encouragement, love and acceptance. Educators are the key to the success of every student who is part of RIS.

Excellence

The school promotes a culture of institutional excellence amongst its students and staff. Our students shall be encouraged to work efficiently and willingly in collaboration with others to become responsible self-confident individuals, independent lifelong learners eager to acquire and apply a diverse range of skills and knowledge. Our staff shall constantly strive towards achieving excellence by being focused, adaptable and ready to take on new responsibilities and roles. Keeping oneself updated of new trends and participating in the professional development program shall ensure that they progress and develop themselves in their roles and life in general.

Global Perspective

Accepting that fact that we are part of a much larger community and acknowledging that our efforts and actions have significant impact on the world community gives our learners a wider and deeper perspective in life. Appreciating cultures, traditions, understanding issues in a more relevant contexts in relation to one another gives us a better understanding of world community.

Collaboration & Team Work

We believe that true learning happens when one collaborates, shares and works in a team. Understanding different perspectives, accepting the differences and working in a group for achieving excellence is going to be the key to success of a 21st century learner.

Respect, Acceptance & Humanity

Our biggest objective as a school is to build the HUMANE aspect in all our learners. We believe that today's children can make a better and prosperous tomorrow only if they are sensitive and respect the diversity that exists across the world. We aim at building a sense of respect & acceptance for others ir-respective of the nationality, or background thus laying the foundations for making a peace driven society.



LEARNING environment

RIS campus is compact yet functional and completely child centred based on the premise that every touch point has to trigger imagination and curiosity. The RIS campus provides platforms for hands-on learning and mind engagement even when one walks through just exploring the campus.



At RIS, we have planned for unique concept spaces that are integrated into the curriculum thus making learning more engaging and fun. With safety and hygiene at top of the priority list the entire infrastructure is CCTV monitored. A WIFI enabled campus ensures that we are connected at all times. Bridging communication gap with a mobile App that ensures that the information of your little ones is just a click away and we remain connected to each other.

Acknowledging inclusivity and also enabling vertical movement in the G+7 structure through dedicated lifts operated by women ensures that the movement is safe and easy. We welcome you to come and experience the learning environment at RIS.



INTERACTIVE spaces

RIS campus promotes hands on experiential based learning. We believe that unless one doesn't create guided spaces and touch points that stimulate child's mind and body, experimental learning module doesn't really take shape.

At RIS we have invested a lot of thought into creating interactive space that promote various aspects of life learning.



The Nature- Scape invites our little ones to sow seeds and observe them as they grow into saplings and plants. Tracking and caring for them is all a part of nature scape learning.

The Flower Pods & Butterfly Zone are all part of the understanding and appreciating life as it evolves.



ACTIVE Kids promotes physical and intellectual play simultaneously ranging from wall puzzles to balanced beams and climbers are all part of the learning and development at RIS.

BEST out of WASTE a unique zone that challenges one to use the waste in a more effective and artistic manner. The concepts of Environment conservation take real shape with activities and initiatives at Best from Waste Zone.



LEARNING Studios

Every classroom or learning studio at RIS is an air conditioned, independent learning unit in itself. Spacious, vibrant, dynamic, technologically integrated, learning studio has an in-class library, interactive touch surfaces, WIFI, lockers for children, mind map boards, art corners for preschoolers, enactment zones, flexi seating and loads of teaching learning aids for the children to explore.



KNOWLEDGE HUB Library

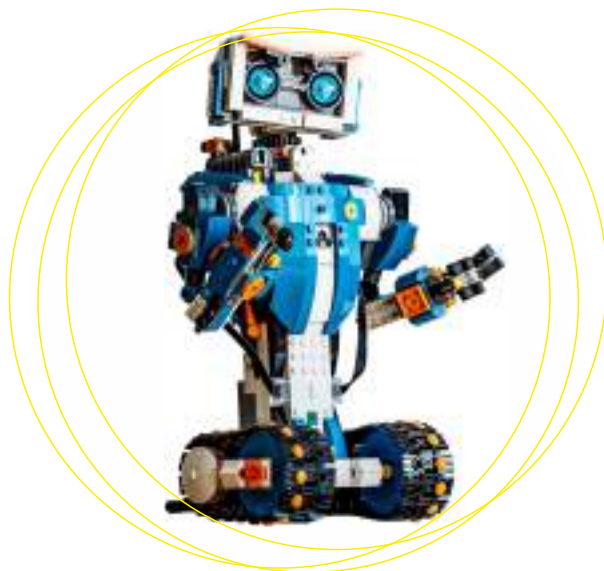
The knowledge Hub at RIS is the core that drives and controls learning. An exclusive space designed for learners to encourage them to explore, experience and express.



DISCOVERY CENTERS

Powered by Augmented Reality

Technology is the pivot around which learning shall revolve at RIS. With the aim of introducing technology and its tool at the right age, to understanding the academic aspect of technology as a core subject, RIS aspires to become a technology driven institution.



SCIENCE labs

Invention, application and deep understanding of concepts is what drives the Science Labs at RIS.



MUSIC studio

Rhythm and melodies play a very important role in every learner's life. Exclusive spaces dedicated to music and movement ensure that the program is implemented independently and effectively.



ART & AESTHETICS workshop

Creativity, visualization, and presentation are the key skills for a 21st century learner. A customized workshop space that inadvertently pushes you to think creatively, appreciate abstract and gives the freedom to draw, create and express in a most wonderful way.



DANCE POD studio

Rhythm and melodies play a very important role in every learner's life. Exclusive spaces dedicated to music and movement ensure that the program is implemented independently and effectively.





SPORTS centre

Physically and mentally
FIT is what all of us aspire
to be at RIS.



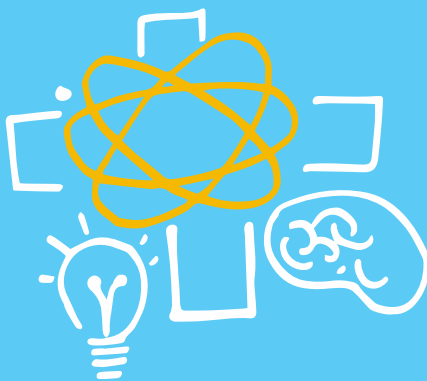
WELLNESS centre

RIS in order to ensure child wellbeing has entered into a strategic tie up with a leading wellness provider of Mumbai. Under their able guidance the medical centre has been set up at the school premises and is managed by the team of medical care givers of the wellness providers only.



I AM POSSIBLE

A unique module that builds confidence and positive self-esteem amongst children, educators and parents at RIS.



BACK 2 BASICS

Educational support program that focuses on Mathematics, English, Science, Humanities & ICT. An enrichment module implemented through customized small group sessions focusing on conceptual clarity and revisiting the basics.

EXPRESSIONS

Creative expressions through Art & Aesthetics, Music & Dance are an integral part of development at RIS. The specially designed, age appropriate curriculums for Art, Creativity and Aesthetics gives a different dimension to learning at RIS.

Music & Dance program is the heartbeat of the school. Offering Indian classical music & dance along with western music and dance, the school aims at covering the entire spectrum.

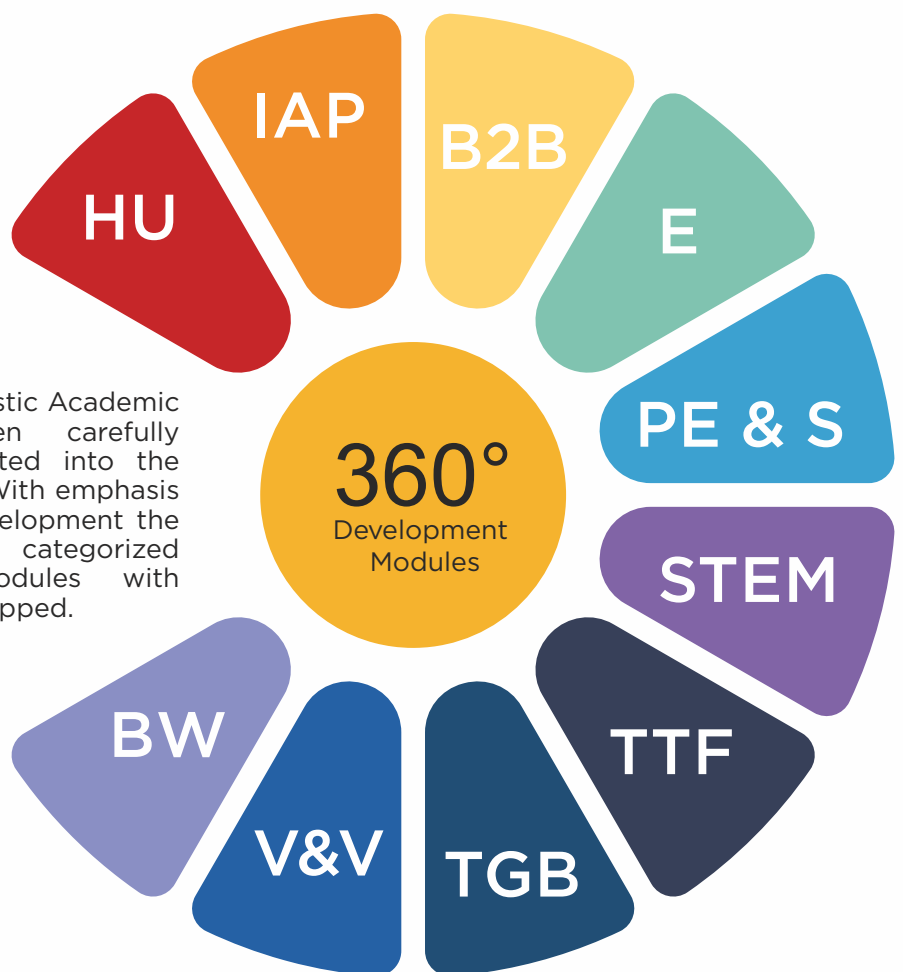


"Children want the same things we want.
To laugh, to be challenged,
to be entertained and delighted."

~ Dr. Seuss

The 360° Development Program at RIS is all about striking the right balance. With appropriate emphasis on wellbeing, exploration, value sensitization, the students at RIS are poised to grow into well groomed and responsible adults. At RIS, children are at the core of every learning and developmental initiative. Our focus is to provide a strong foundation and put children on a fast track of growth and empowerment.

At RIS, the Co-scholastic Academic program has been carefully devised and integrated into the learning curriculum. With emphasis on all aspects of development the program has been categorized under specific modules with outcomes that are mapped.



HAPPINESS Unlimited

A unique program that focuses on the physical, mental and emotional health of our children.



Academic Program

EARLY YEARS FOUNDATION STAGE [Play group, Nursery, Jr. Kg. and Sr. Kg.]

It's a known fact that the brain activity is maximum during the early years of a child's physical development. The Early Years Curriculum at RIS has been customized to give our little ones maximum stimulus in a safe, exciting and magical learning environment.

The principles of learning applied in the Early Years Kindergarten Learning program include Holistic Development and Learning (Aesthetics and Creative Expression, Language and Literacy, Numeracy, Self and Social Awareness); Integrated Learning; Active Learning; Supportive Learning; Interactive Learning and Learning through Play. The curriculum prepares children for a smooth transition to a more formal Cambridge Primary curriculum. Play, explore and discover through dance, music, art and craft.

Sports and interactions with sports teachers help in strengthening coordination and motor skills, and instil enthusiasm for sports. Picnics and field trips enhance students' understanding of their surroundings. Celebration of festivals sensitises them to multiple traditions and cultures.

Every child at this age needs maximum exposure both within classroom and beyond classroom initiatives. RIS prides itself in giving each child what he /she needs to flourish academically. At RIS, we benefit from an unparalleled depth and breadth of educational expertise, with pedagogical experts developing a learning curriculum that is based on the EYFS framework and integrates Multiple Intelligences approach towards learning. With age appropriate and a fun filled teaching learning approach coupled with trained educators and a sensitive team of caregivers, The Early Years Kindergarten Learning program at RIS will keep children excited and happy.

A holistic curriculum that not only focuses on developing the knowledge of language , numeracy and environment but also gives equal relevance to music and movement, STEM, physical play, sensory play, theater and drama, stories and fables and much more that ensures that our little ones are developing physically , intellectually, emotionally and culturally.

We invite you to visit our Pre Primary Wing at RIS and see how children fall in love with their learning environment and become ACTIVE Learners.

**Nursery
Program**
Age : 3 years

**Jr. Kg
Program**
Age : 4 years

**Sr. Kg
Program**
Age : 5 years



Academic Program

PRIMARY SCHOOL Learning Program (Grades : 1st – 5th)

The Primary School Learning Program is a natural extension of the Early Years Program. With a special bridge curriculum designed to ensure that our little ones move comfortably to Grade 1, the Primary School learning program opens a new dimension to experience international curriculums in action. RIS aims to provide a balanced educational interface to students studying in Grades 1 to 5. We offer our students a rounded educational experience with opportunities to develop and grow in all areas whilst placing a strong emphasis on academic excellence. With our core focus on Language, Numeracy and Science, we place substantial importance on enabling our students to become well rounded individuals by providing them opportunities to be a part of a strong curricular, sporting, and co-curricular program.

RIS proposes to align itself with the CIE curriculum and do 100 % justice to the learning framework. A forward looking curriculum which helps to provide students with a dynamic and progressive understanding of the world they live in as well as prepares them for an ever evolving future. With technology, culture and library resources at the core of collaborative learning system, we ensure that education remains holistic and relevant throughout the Primary Years at RIS.

As our students progress naturally, RIS shall offer Middle School and High School program on the same campus in the subsequent years to come.

Experience the
Primary Years
Program at RIS and
appreciate the
holistic approach to
learning.



Academic Program

CAMBRIDGE

Lower Secondary School Program

[Grades: 6th - 8th]

The Middle School Cambridge Lower Secondary program is structured to meet children's varied intellectual and developmental needs. It ensures progression and continuity across various stages of learning in the School, and incorporates continuous evaluation and review of children's performance. The main aims of the program are developing skills related to writing, reading, reflecting, critical thinking, public speaking, fostering initiative among students and a desire to acquire knowledge. Academic subjects include English, Hindi/French, Marathi, Mathematics, Science, History, and Geography. The ICT Starters Award offered by the University of Cambridge continues up to Class VII.

Art, Drama, Computer studies, Music, Karate, Yoga and Dance are integrated into the mainstream curriculum and are further strengthened as optional co-curricular activities. PSHE (Personal, Social, Health Education) helps students address their age-specific interests and concerns, builds awareness, and promotes compassionate and ethical conduct.

Physical Education is offered in a more formal manner and sports skills are fine-tuned. The Integration Project showcases the knowledge and skills acquired by students in various subjects, and serves as a concrete step towards developing interdisciplinary approaches in later years. Field trips and excursions aid in developing social skills and in raising awareness about the world. Projects, presentations and group activities are more formal and research-based. Inter-house cultural and sports competitions encourage healthy competition and team spirit. Students begin to contribute to class assemblies, concerts and drama productions, and take up roles of responsibility. Community service is offered through School initiated program and partnerships with NGOs.



Academic Program

CAMBRIDGE

Upper Secondary Program [IGCSE Program]

[Grades: 9th & 10th]

The IGCSE (International General Certificate of Secondary Education) program is administered by CAIE (Cambridge Assessment International Examinations). In the two-year IGCSE program at RIS, grades 9th and 10th learners study a range of subjects that are exciting and challenging. While the program is international in outlook, it very much retains local relevance. The holistic and experiential nature of learning balances knowledge, understanding and skills, and ensures that students are well-prepared for the pre-university program.

Through a stimulating classroom environment and high levels of student engagement, the program empowers students to build on their own learning styles. In doing so, the curriculum actively supports discussion-based learning and hands-on activities, and embeds innovative approaches to learning across all subjects. In Grade 8, which is a preparatory year, students study First Language English, Hindi or French as a Second Language; History, Geography, Physics, Chemistry, Biology, Mathematics, Economics and Environmental Management. In addition, they learn Indian and Western Music, Dance, Yoga, Karate, Art and Drama.

The co-curricular activities and service initiatives are integral to student life, nurturing self-aware individuals who are responsible towards themselves and the community. Students have opportunities to pursue their varied interests and engage in overseas exchange program, the International Award for Young People (IAYP) trips, Model United Nations (MUN), the Japanese Student Exchange program and educational trips.

Subjects offered for IGCSE Classes IX and X				
Group I	Group II	Group III	Group IV	Group V
Languages	Humanities & Social Sciences	Sciences	Mathematics	Creative and Professional
First Language English A Foreign Language (French) or A Second Language (Hindi)	World Literature Global Perspectives Geography History Economics	Physics, Chemistry and Biology (all 3) or Co-ordinated Sciences Environmental Management	International Mathematics International Mathematics Additional Mathematics (optional)	Business Studies Global Perspectives

ICE is awarded with Distinction, Merit or Pass.

Distinction: Grade A or better in five subjects and grade C or better in two subjects.

Merit: Grade C or better in five subjects and grade F or better in two subjects.

Pass: Grade G or better in seven subjects.

Individual subjects are graded A* to G with A* being the highest.

Cambridge Pathway

Cambridge Primary

5 to 11 years old*

- English (1st and 2nd language)
- Mathematics
- Science
- ICT
- Cambridge Global Perspectives

Cambridge Lower Secondary

5 to 11 years old*

- English (1st and 2nd language)
- Mathematics
- Science
- ICT
- Cambridge Global Perspectives

Cambridge Upper Secondary

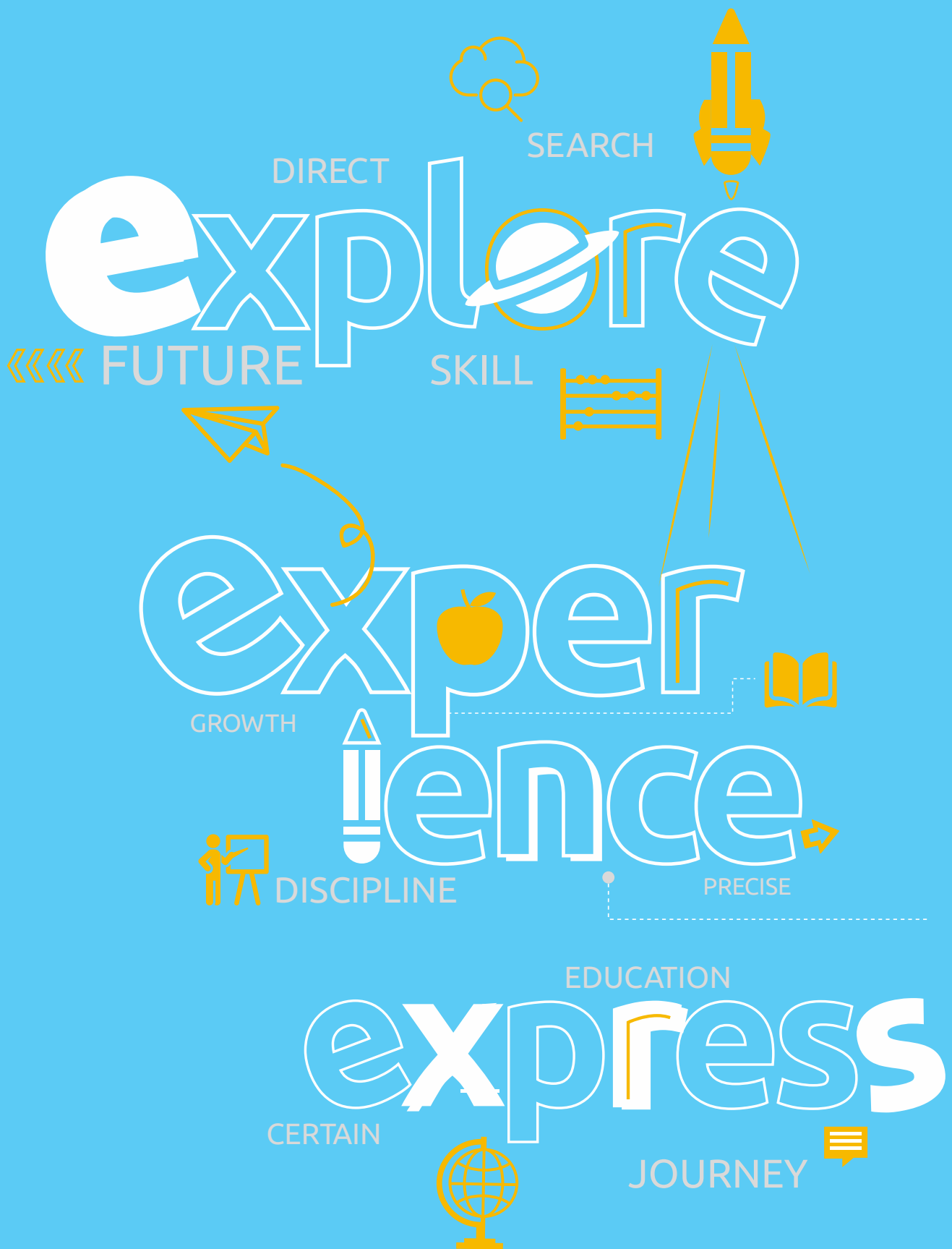
14 to 18 years old*

- A Wide Choice of subject at :**
- Cambridge IGCSE (70+ Subjects)
 - Cambridge ICE Certificate

Cambridge Advanced

18 to 19 years old*

- A Wide Choice of subject at :**
- Cambridge International as & A Level (55+ subjects)
 - Cambridge AICE Diploma



📍 Rejoice International School
 Chincholi Bunder, Malad (W),
 ☎ +91 077388 72777
 ✉ info@rejoiceinternationalschool.com
 🌐 www.rejoiceinternationalschool.com
 📷 <http://www.instagram.com/rejoiceinternationalschool/>
 ▶ <https://www.youtube.com/channel/UCxPaKxQ0tIFzEbAFcVA7QOA>